

# ROGUE RIVER BOATER'S GUIDE

50<sup>th</sup>  
Anniversary  
Edition



U.S. DEPARTMENT OF THE INTERIOR  
BUREAU OF LAND MANAGEMENT



U.S. DEPARTMENT OF AGRICULTURE  
U.S. FOREST SERVICE



# THE ROGUE RIVER

## A CLASSIC OREGON ADVENTURE

**The Rogue River—Siskiyou National Forest and the Medford District Bureau of Land Management are pleased to welcome you to the Rogue River.**

It is our privilege to jointly manage this national treasure. The BLM administers the river corridor from the Applegate River downstream to Mule Creek. The Forest Service administers from Mule Creek downstream to Lobster Creek. We wish you a safe and satisfying journey.

Please help care for your public lands and rivers and come back to visit again.

Use of the Wild section of the Rogue River is regulated from May 15-October 15 to protect the river corridor from overuse and to provide a wild river experience. For more information, see page 23.

## TABLE OF CONTENTS

WELCOME TO THE ROGUE RIVER...2

OVERVIEW MAP.....3

RIVER SAFETY.....4

INTL RAPID RATING SYSTEM.....5

BLM RECREATION SECTION.....6

SHUTTLE MAP & WILD LEGEND.....7

WILD & SCENIC RIVER MAPS

    WILD SECTION 1.....8

    WILD SECTION 2.....10

    WILD SECTION 3.....12

    WILD SECTION 4.....14

    WILD SECTION 5.....16

    WILD SECTION 6.....18

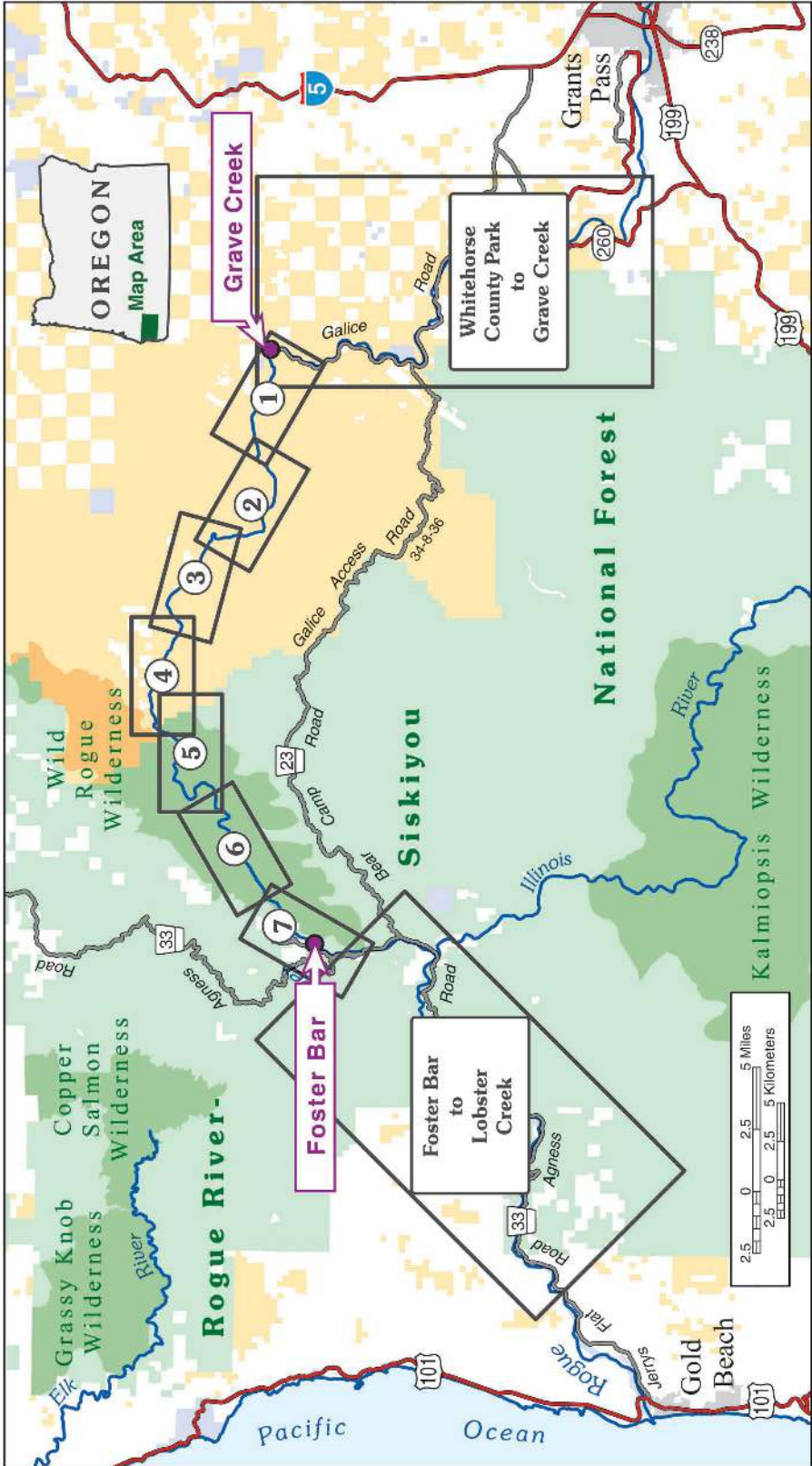
    WILD SECTION 7.....20

    USFS SECTION.....22

CONTACT.....23

# OVERVIEW MAP

## OREGON'S WILD & SCENIC ROGUE



# RIVER SAFETY

**Floating the Rogue River is thrilling, enjoyable, and generally safe; however, river running and camping have inherent risks. Think before you act, use your common sense, and respect the strengths and hazards of the river.**

## ***Remember these safety hints:***

### ***When in Doubt, Scout!***

If you are not sure about a rapid, pull over to the shore and walk ahead to look over the situation. Do not invite a blind encounter with the unknown.

### ***When in Trouble, Be Active.***

When you find yourself in a difficult situation or if your craft is out of control, always keep trying to help yourself. Boaters who stay active in times of trouble are usually able to extricate themselves, while boaters who become inactive with fear or indecision succeed only by chance.

### ***Dress For Success; Wear Your Life Jacket.***

Make sure it is a U.S. Coast Guard-approved Type III or Type V model, best for whitewater boating. Plan for all kinds of weather by packing an accessible day-bag with clothing to keep you comfortable and safe from hypothermia.

### ***Watch Your Step.***

River sandals offer the best traction on wet rocks from slips, trips, and falls. Wearing a life jacket on land can be the best protection if you fall.

### ***Most Accidents Happen in the Home.***

On a river trip, your camp is your home. This is where you will encounter sharp knives, hot stoves, toe-stubbing rocks, bees, yellow jackets, ticks, rattlesnakes, and poison oak. Pay attention to where you put your hands and feet.

### ***Think Before You Drink.***

Neither the river nor any side streams are tested or treated, and they may or may not meet safe drinking water standards. Boil, filter, or chemically treat all drinking, cooking, and dishwashing water.

### ***Carry Your Whistle.***

A sound making device (whistle or airhorn) is required on all personal watercraft and is handy in an emergency.

# INTERNATIONAL RAPID RATING SYSTEM

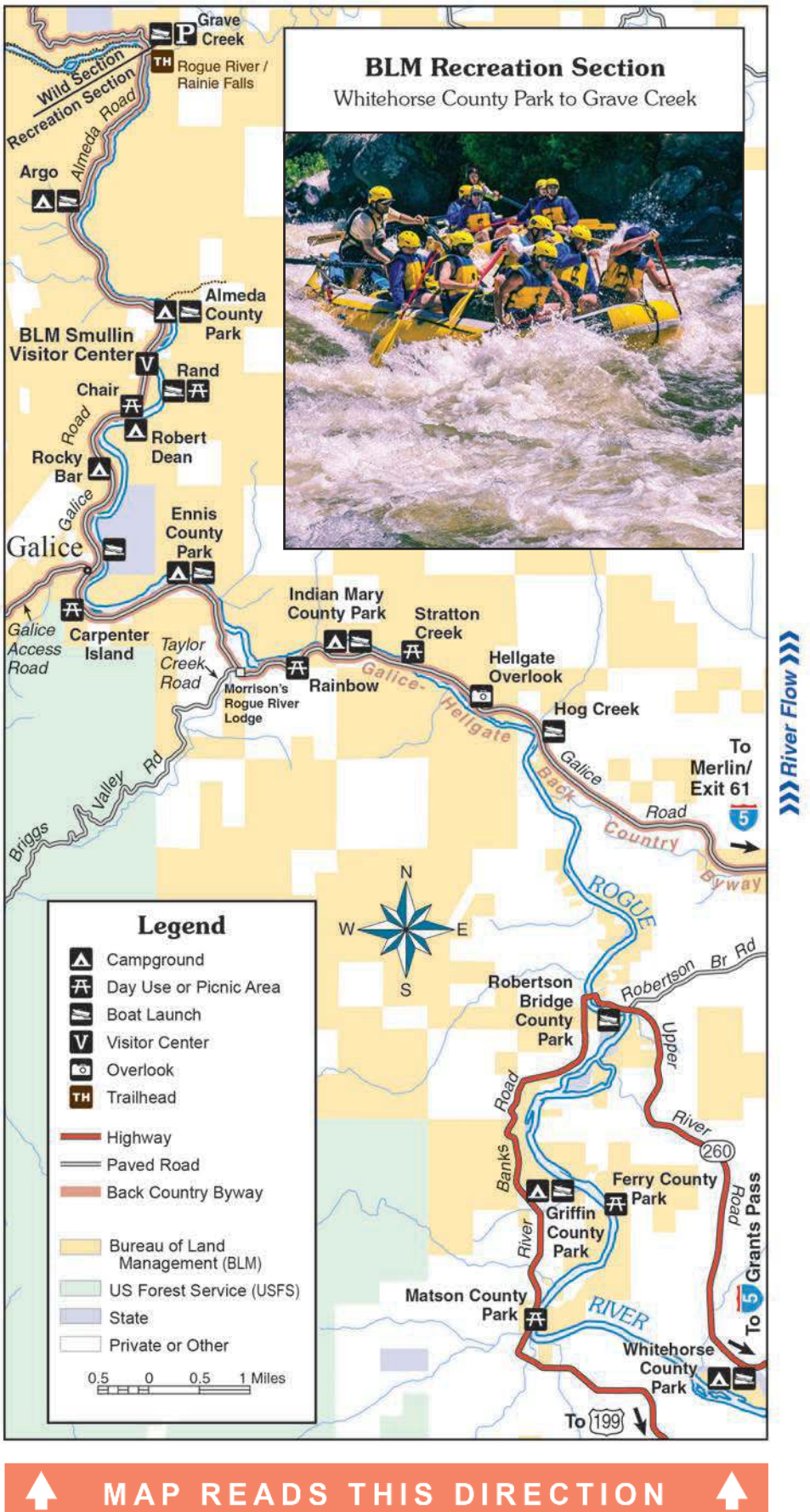
Whitewater rapids are rated on a scale of one through six, indicating the difficulty of each rapid at medium water level.

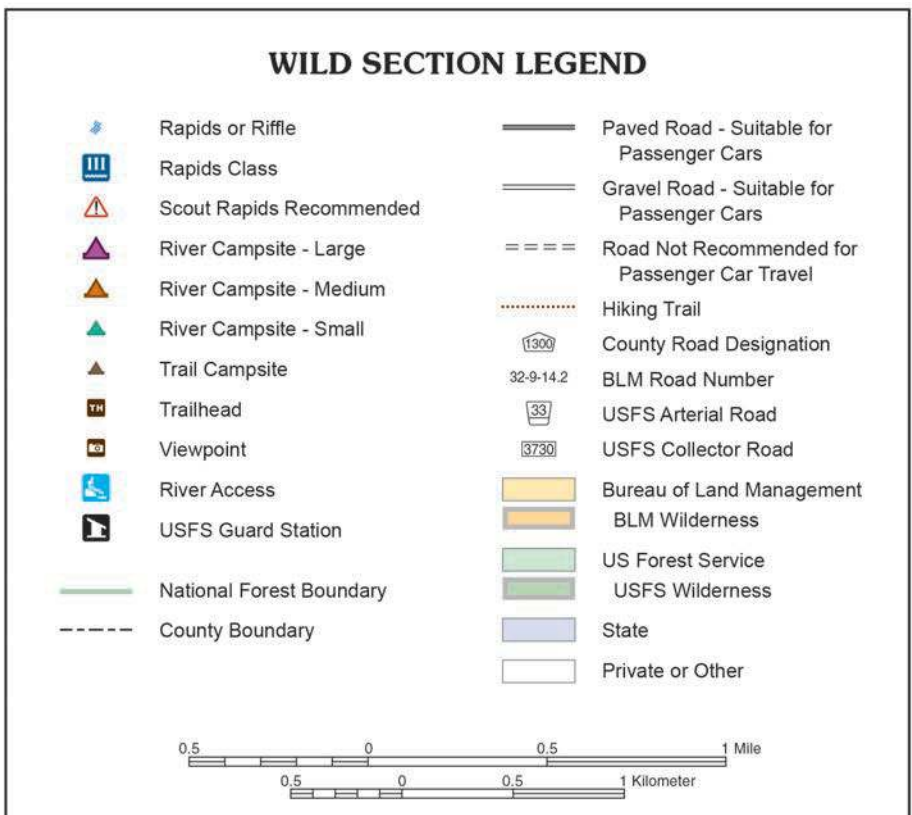
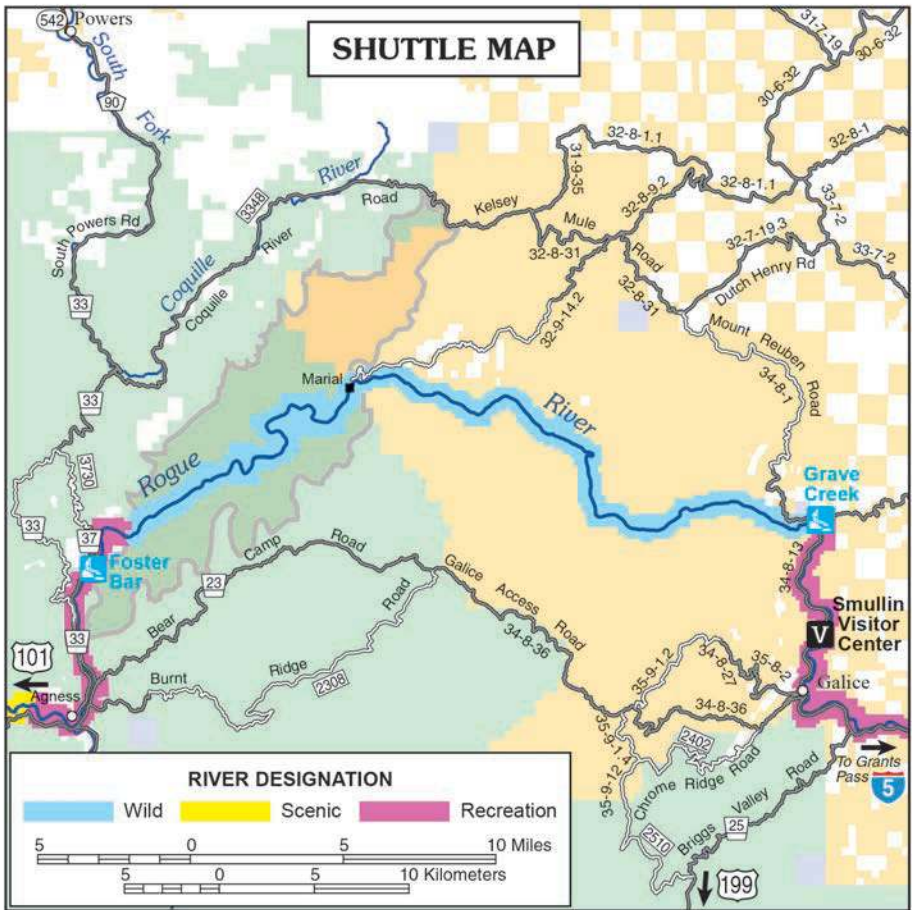
<b>Class I</b> <b>Very Easy</b>	<i>Small, regular waves and riffles; few or no obstacles; little maneuvering required.</i>
<b>Class II</b> <b>Easy</b>	<i>Small waves with some eddies, low ledges, and slow rock gardens; some maneuvering required.</i>
<b>Class III</b> <b>Medium</b>	<i>Numerous waves that are high and irregular; strong eddies; narrow, but clear passages that require expertise in maneuvering; scouting from the shore necessary.</i>
<b>Class IV</b> <b>Difficult</b>	<i>Long rapids with powerful, irregular waves, dangerous rocks, and boiling eddies; precise maneuvering and scouting from the shore imperative; take all possible safety precautions.</i>
<b>Class V</b> <b>Very Difficult</b>	<i>Long rapids with wild turbulence and extremely congested routes that require complex maneuvering; a danger to your life and boat and near the limits of navigation.</i>
<b>Class VI</b> <b>The Limits of Navigation</b>	<i>Rarely run; a definite hazard to your life.</i>

These definitions are constant and unchanging; however, personal interpretation can vary. The same rapid may be rated a Class III by one person and a Class IV by someone else. You must determine for yourself the degree of difficulty of any particular rapid. Remember that fluctuating water levels can change the difficulty ratings for rapids. Higher flows make the water more powerful and cover up more rocks. Lower water makes the rapids more technical with more rocks to miss.

On the Rogue River, flows below 1,200 cfs are considered low; flows above 6,000 cfs are considered high. Normal spring and summer flows are usually between 4,000 and 1,200 cfs.









# WILD SECTION 1

River Campsite Guide								
Campsite Name	Miles From Grave Cr	Side of River	Trail Access	Flow Range/CFS	# of Boats	# of People	# of Tents	Site Description
Wildcat	5.15	L	No	1200-4000	10	20+	10	Large sandy bench with tent sites spread across site. Toilet blind. Boat landing shallow and muddy at/below 1500 cfs.
Upper Wildcat	5.05	L	No	1200-4000	10	20+	10	Large sand beach with easy access from river. This site is considered to be separate from Wildcat camp.
Tyee	4.50	R	Yes	1200-4000	10	20+	10	Large, flat sand beach. Popular campsite for large groups.
Buck	3.75	L	No	1200-4000	2	4	2	Small sand campsite behind a stand of willows.
Fawn	3.65	R	No	1200-4000	2	6	4	Small sand campsite behind a dense willow stand.
Doe Creek	3.60	L	No	1200-4000	10	20	20	Large flat sandy beach located on upper bench behind willow stand.
Cave Rock	3.45	L	No	1200-4000	11	16	8	Multiple tent sites on sand behind willow stand.
BLS	3.40	L	No	1200-4000	6	12	6	Sandy tent sites on sand located between boulders and bedrock.
Lower Rum Creek Bar	3.25	L	No	1200-4000	12	12	6	Cobble bar with small sand camp area behind stand of willows.
Lower Whiskey Creek	3.20	R	Yes	1200-4000	6	20	12	Sandy/grassy campsite on upper bench. Multiple satellite tent sites. Campsite is limited by a small boat landing.
Whiskey Creek	3.10	R	Yes	1200-4000	11	30	15	Large sand beach with steep approach. Popular with boaters and hikers. Access to Whiskey Creek Cabin NHS. Bear resistant food storage.
Too Tires	2.65	R	No	1200-4000	2	2	1	Small sand beach with steep access from river between bedrock outcrops.
Pre-rum Creek	2.55	L	No	1200-4000	8	4	2	Flat sand beach with spring creek which splits the site.
China Gulch	2.15	R	Yes	1200-4000	5	10	5	Long sand beach with multiple satellite tent sites surrounded by low vegetation.
Fishbone	2.10	L	No	1200-4000	8	8	5	Satellite tent sites on sand pockets between exposed bedrock.
Whoo Beach	2.05	R	Yes	1200-4000	6	6	3	Rocky shoreline with sandy tent sites scattered between boulders.
Upper Fishermans Haven	1.95	L	No	>1500	5	6	3	Gravel covered bench among bedrock outcrops and boulders. Site becomes available below 1500cfs.
Rainie Falls Left	1.75	L	Yes	1200-4000	5	2	1	Small sand beach above Rainie Falls. No direct access to Rogue River Trail. Camp has access to a BLM outhouse.
Rainie Falls Right	1.70	R	Yes	1200-4000	5	12	6	Sand beach set back from river behind a willow stand with two landing areas.
Sanderson Left	.75	L	No	1200-4000	2	2	1	Small sand beach with rock walls, located directly across from Main Sanderson.
Lower Sanderson	.70	R	Yes	1200-4000	3	6	2	Flat sand beach located immediately below Main Sanderson camp.
Main Sanderson	.65	R	Yes	1200-4000	8	2	1	Sloping sandy beach with narrow flat area for tents at top of site.
First Stop Beach	.60	L	No	1200-4000	8	8	5	Flat sand bench among bedrock outcrops featuring morning shade and a rocky boat landing.

 River Campsite - Large 
  River Campsite - Medium 
  River Campsite - Small

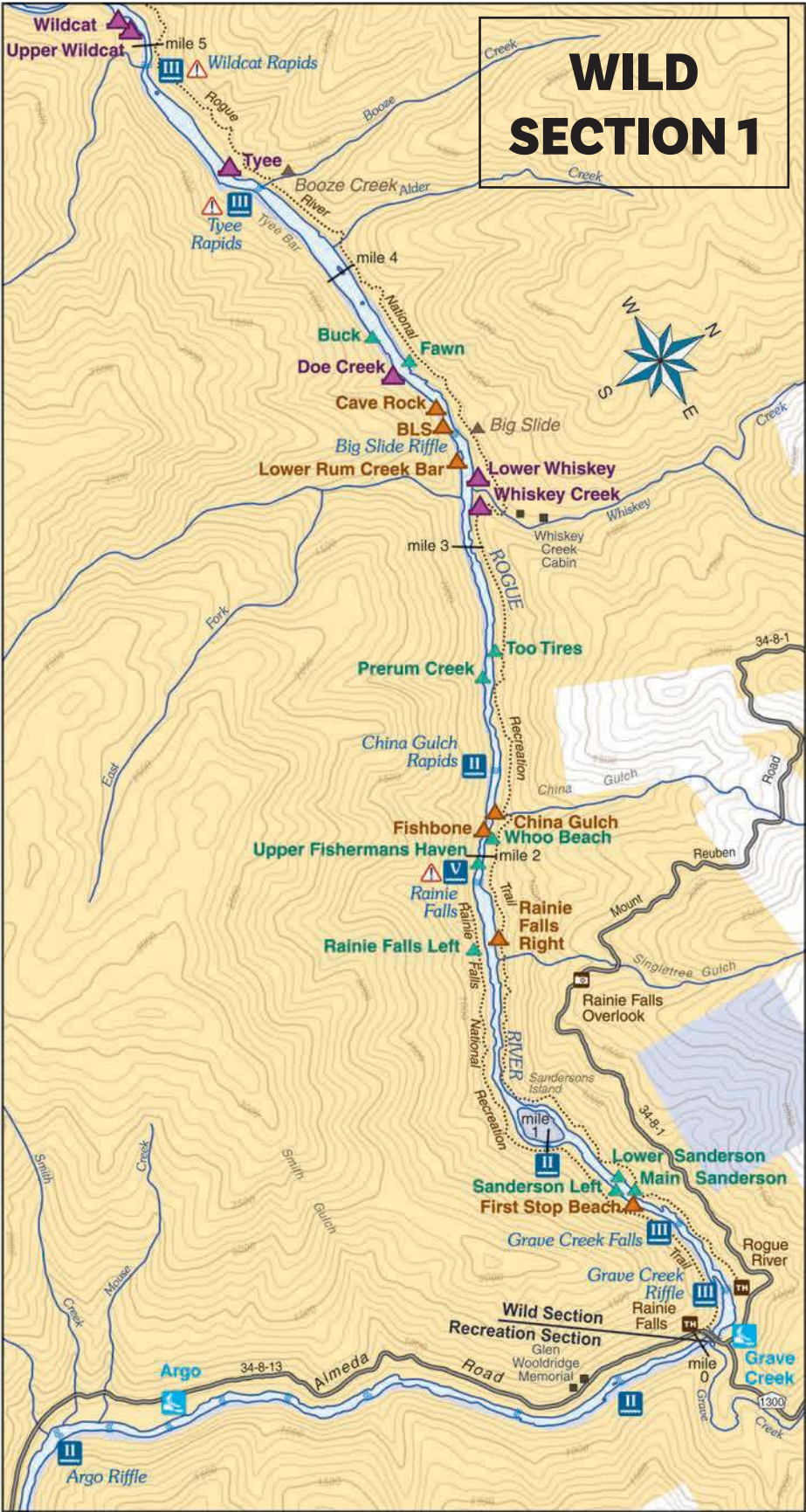

**TABLE READS THIS DIRECTION**


## Selecting River Campsites

River campsites are identified by their size . These campsites may change from year to year, due to water events and levels. Please select the appropriate site for your group size. Be prepared to share campsites with other boaters or hikers.



SECTION 2



»»» River Flow »»»

↑ MAP READS THIS DIRECTION ↑

# WILD SECTION 2

Campsite Name	Miles From Grave Cr	Side of River	Trail Access	Flow Range/CFS	# of Boats	# of People	# of Tents	Site Description
Bar View	11.25	R	No	1200-4000	2	4	2	Small sandy bench with room for two tents and two boats.
Telephone Bar	11.25	L	No	1200-4000	10	6	3	Cobble bar with calm backwater landing area with two small sand sites.
Lower Horseshoe	11.15	R	No	1200-4000	12	20+	12	Sandy beach landing leads to mixed sand and grass upper bench with satellite sites. Grassy bench satellite sites up-river included.
Middle Horseshoe	11.10	R	No	1200-4000	8	12	6	Sandy beach landing. Tent sites on beach with one in grass above beach. Grassy bench sites considered part of Lower Horseshoe.
Mondrone Monkey	10.90	R	No	1200-4000	3	6	3	Camp is difficult to spot from river, just below Horseshoe Bend. Limited boat landing area leads to small sand tent sites scattered between boulders.
Horseshoe Bend	10.70	R	Yes	1200-4000	8	20+	12	Rock and sand landing, upper bench camp area. Separate from Upper Horseshoe Bend camp. Bear resistant food storage.
Upper Horseshoe	10.60	R	Yes	1200-4000	8	20+	8	Swift-water landing, large cobble bench with multiple sand tent sites. Separate camp from Main Horseshoe Camp. Steep climb to Trail.
Jenny Creek	10.20	L	No	1200-4000	7	16	8	Gravel boat landing at mouth of creek. Tent sites are dispersed on both sides of Jenny Creek.
Upper Jenny Creek	10.15	L	No	1200-4000	5	6	3	Sloping, sand beach landing with a sandy bench for camping.
Little Windy	9.30	L	No	1200-4000	8	15	7	Sloping sandy beach leading to tent sites on grassy upper bench. Adjacent to Little Windy Creek.
Upper Black Bar	8.40	R	No	1200-4000	4	2	1	Steep, sandy landing area up to small sandy tent site. This is the landing area for scouting Upper Black Bar rapid.
Big Windy	8.25	L	No	1200-4000	4	8	4	Steep, rugged bedrock approach from landing area to camp area. Adjacent to Big Windy Creek. Popular Day Stop. Outhouse.
Sand Trap	8.05	R	No	1200-4000	3	6	3	Sloping sandy access to a small sandy bench.
Gravel Garden	8.0	R	No	1200-3500	3	6	3	Sloping landing area leads up to a sand and gravel bench approximately 40' above river level.
Sand Rock	7.85	L	No	1200-3500	2	4	2	Secluded pocket beach among rock outcrops.
Gravel Slide	7.65	R	No	1200-3500	3	4	2	Rocky, gravel landing area with steep climb to sand camping between bedrock outcrops 50' above river.
Island Beach	7.50	L	No	1200-4000	7	6	3	Secluded, sloping, sand beach surrounded by high rock walls.
Roll Over Bar	7.25	R	Yes	1200-4000	5	10	4	Muddy riverbank landing area among bedrock boulders with a sandy bench for tent sites.
Slanted Slate	6.40	L	No	1200-4000	4	6	3	Small, mixed sand, gravel, and cobble beach surrounded by slate outcropping.
Wildcat	5.15	L	No	1200-4000	10	20+	10	Large sandy bench with tent sites spread across site. Toilet blind. Boat landing shallow and muddy at/below 1500 cfs.
Upper Wildcat	5.05	L	No	1200-4000	10	20+	10	Large sand beach with easy access from river. This site is considered to be separate from Wildcat camp.
Tyee	4.50	R	Yes	1200-4000	10	20+	10	Large, flat sand beach. Popular campsite for large groups.

▲ River Campsite - Large    ▲ River Campsite - Medium    ▲ River Campsite - Small

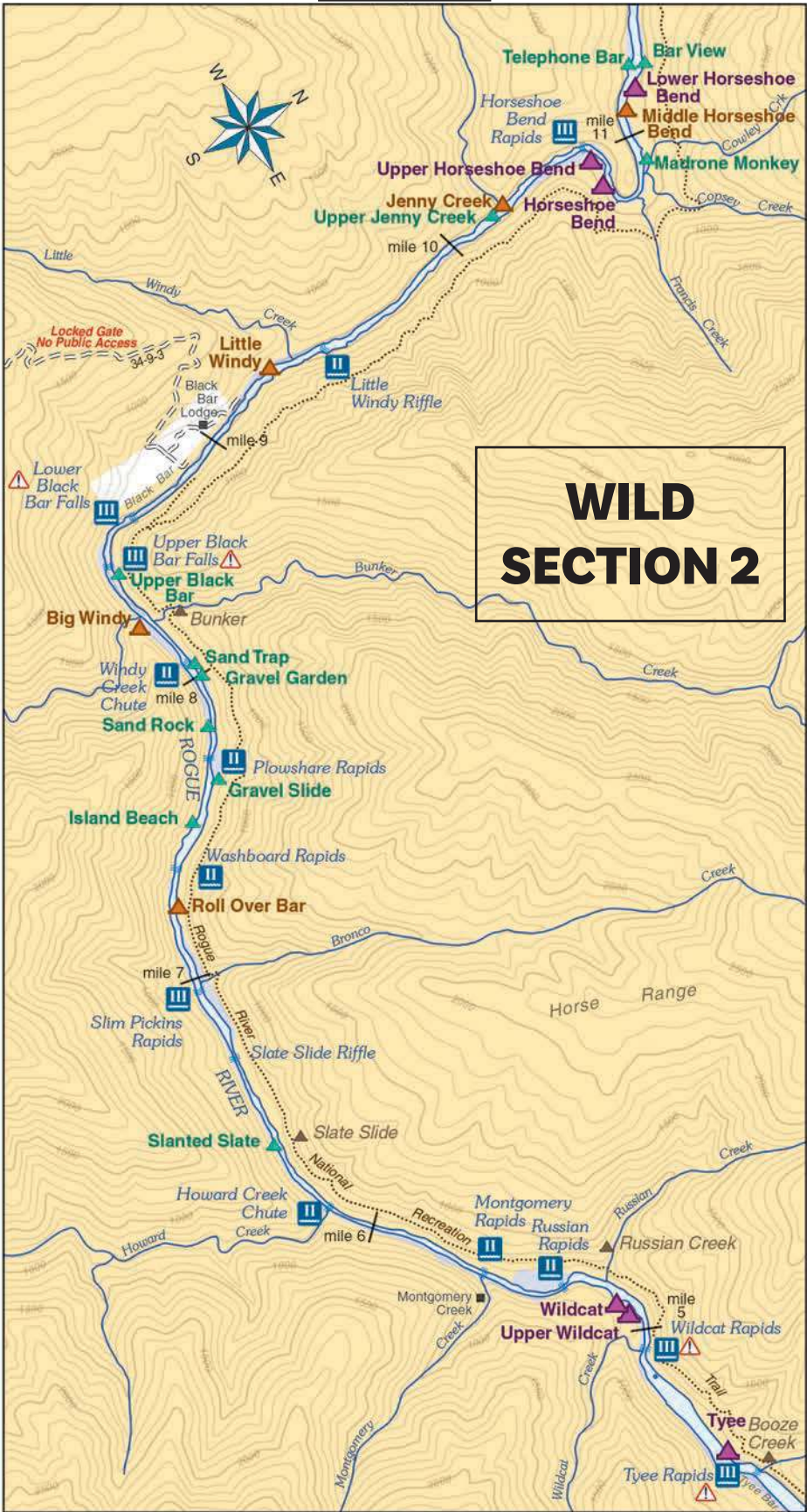
↑ TABLE READS THIS DIRECTION ↑

## Required Equipment

- Portable Toilet
- Firepan
- Permit (during permit season)
- Oregon Aquatic Invasive Species Permit (see link on page 23)
- Personal Flotation Device
- Sound making device (whistle or airhorn)



SECTION 3



River Flow

SECTION 1

MAP READS THIS DIRECTION

# WILD SECTION 3

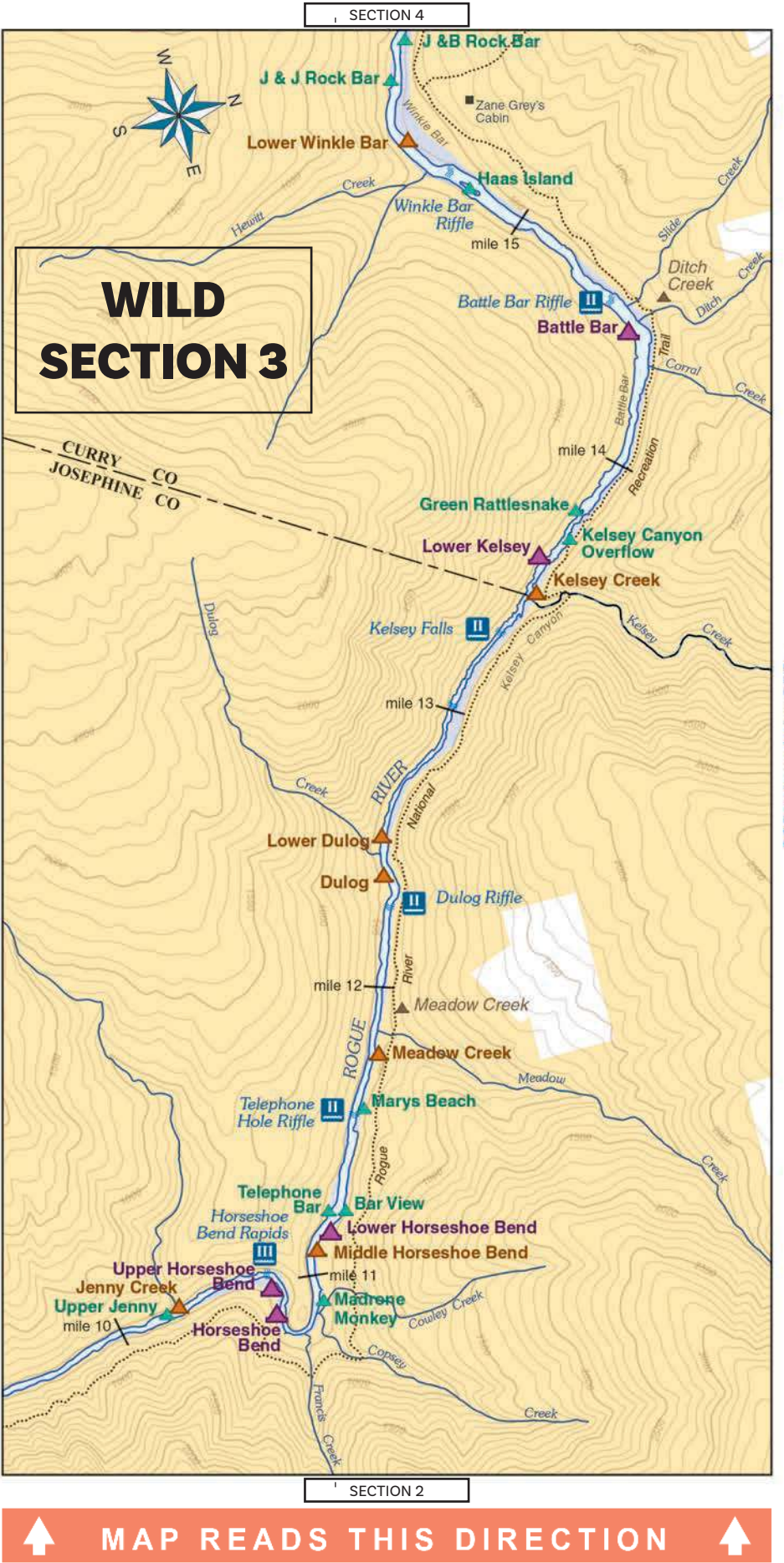
Campsite Name	Miles From Grave Cr	Side of River	Trail Access	Flow Range/CFS	# of Boats	# of People	# of Tents	Site Description
J and B Rock Bar	15.85	R	Yes	1200-4000	4	6	3	Sandy beach landing with three small tent sites on sand.
J and J Rock Bar	15.70	L	No	1200-4000	5	2	1	Gravel/cobble bar with one rocky tent site. Good option for boaters with cots.
Lower Winkle Bar	15.50	R	Yes	1200-4000	5	10	5	Long rock/sand bench with flat tent sites amidst willow stand. Popular stopping area for lunch/exploring of Zane Gray Cabin NHS.
Haas Island	15.20	Isl	No	1200-4000	6	2	1	Mid-channel cobble island with a few level areas for tent sites.
Battle Bar	14.45	L	No	1200-4000	12	24	12	Two landing areas separated by willows. Sandy camp area by river. Steep trail access to large upper bench. 20'x40' historic shelter.
Green Rattlesnake	13.80	L	No	1200-4000	3	6	3	Small sand beach tucked into a backwater eddy landing. Tricky boat access at water levels below 1500 cfs.
Kelsey Overflow	13.70	R	Yes	1200-4000	3	6	3	Swift water landing to mixed sand/gravel beach between bedrock formations. Located across the river from Lower Kelsey.
Lower Kelsey	13.60	L	No	1200-4000	10	20+	15	Sloping sand bar landing with large upper sand beach. Adjacent to a lower beach with an additional landing area/sites.
Kelsey Creek	13.45	R	Yes	1200-4000	4	8	4	Landing not easily recognized from river. Steep bedrock approach to main camp on bench with several satellite tent sites.
Lower Dulog	12.50	L	No	1200-4000	5	10	5	Located approx 300 yards below Main Dulog camp. Swift water landing on small beach with sand sites on upper bench.
Dulog	12.35	L	No	1200-4000	6	10	5	Sand beach landing and sand bench campsite with several tent sites.
Meadow	11.75	R	Yes	1200-4000	7	14	7	Sandy beach with bedrock boulders and several satellite tent sites on grassy bench.
Mary's Beach	11.60	R	No	1200-4000	6	6	3	Two landing areas on either side of large boulder with several sand tent sites.
Bar View	11.25	R	No	1200-4000	2	4	2	Small sandy bench with room for two tents and two boats.
Telephone Bar	11.25	L	No	1200-4000	10	6	3	Cobble bar with calm backwater landing area with two small sand sites.
Lower Horseshoe	11.15	R	No	1200-4000	12	20+	12	Sandy beach landing leads to mixed sand and grass upper bench with satellite sites. Grassy bench satellite sites up-river included.
Middle Horseshoe	11.10	R	No	1200-4000	8	12	6	Sandy beach landing. Tent sites on beach, with one in grass above beach. Grassy bench sites considered part of Lower Horseshoe.
Mondrone Monkey	10.90	R	No	1200-4000	3	6	3	Camp is difficult to spot from river, just below Horseshoe Bend. Limited boat landing area leads to small sand tent sites scattered between boulders.
Horseshoe Bend	10.70	R	Yes	1200-4000	8	20+	12	Rock and sand landing, upper bench camp area. Separate from Upper Horseshoe Bend camp. Bear resistant food storage.
Upper Horseshoe	10.60	R	Yes	1200-4000	8	20+	8	Swift-water landing, large cobble bench with multiple sand tent sites. Separate camp from Main Horseshoe Camp. Steep climb to Trail.
Jenny Creek	10.20	L	No	1200-4000	7	16	8	Gravel boat landing at mouth of creek. Tent sites are dispersed on both sides of Jenny Creek.
Upper Jenny Creek	10.15	L	No	1200-4000	5	6	3	Sloping, sand beach landing with a sandy bench for camping.

▲ River Campsite - Large    ▲ River Campsite - Medium    ▲ River Campsite - Small

↑ TABLE READS THIS DIRECTION ↑







# WILD SECTION 4

Campsite Name	Miles From Grave Cr	Side of River	Trail Access	Flow Range/CFS	# of Boats	# of People	# of Tents	Site Description
Marial Beach	20.40	R	Yes	1200-4000	6	4	4	Several tent sites on small rocky beach. Additional tent area on grass in roadway above beach. NOTE* See below
West Mule Creek	20.15	R	Yes	1200-4000	5	10	5	Sandy beach next to East Mule Creek Camp, separated by bedrock outcrop. Does not have sites on grass bench above mouth of creek.
East Mule Creek	20.10	R	Yes	1200-4000	10	20+	10	Sandy beach next to Mule Creek. Rock outcrop separates East and West Mule sites. Includes sites on grass bench above mouth of creek.
Last Chance	20.10	R	Yes	1200-4000	2	2	1	Rocky beach with steep trail to one small tent site. Landing is behind a rock buttress adjacent to Mule Creek. Rogue River Ranch access.
RRR South Bank Overflow	20.05	L	No	1200-4000	4	4	2	Small beach with a couple satellite tent sites at the top of gravel slope. Located across the river from West Rogue River Ranch camp.
RRR South Bank	20.0	L	No	1200-4000	2	2	1	Rocky landing with trail to one sandy tent site. Directly across the river from East Rogue River Ranch camp.
West Rogue River Ranch	20.0	R	Yes	1200-4000	7	14	7	Sand bar with access to the Rogue River Ranch NHS. Camp is two separate campsites split by willow stand. Must be shared. Bear fence.
East Rogue River Ranch	20.0	R	Yes	1200-4000	8	16	8	Large sand bar with access to the Rogue River Ranch NHS. Camp is two separate campsites split by willow stand. Must be shared. Bear fence.
Little Maggie	19.10	L	No	1200-4000	3	4	2	Small sand and gravel beach with two tent sites.
KAI Beach	18.35	R	No	1200-4000	4	6	3	Small gravel bar landing with several tent sites. Satellite tent sites scattered on sand pockets between the boulders.
Long Beach	17.65	R	No	1200-4000	12	12	5	Long, rocky landing area provides access to a sandy bench that will accommodate five tents.
Long Gulch	17.55	L	No	1200-2500	6	6	3	Cobble landing area with several small sand tent sites at back of bar behind a willow stand. Outhouse.
Corner Camp	17.05	L	No	1200-4000	4	4	3	Small sandy beach with several tent sites among rock outcroppings. At low flows additional tent site beyond upriver outcrop.
Quail Creek	16.95	R	No	1200-4000	6	12	6	Two separate sand landing areas on either side of bedrock outcrop. Sandy bench with multiple sites. Adjacent to Quail Creek.
Lower Missouri Bar	16.75	L	No	1200-4000	4	6	4	Small sand beach landing with access to several dispersed tent sites on a sand and grass bench among a willow stand.
Middle Missouri Bar	16.70	L	No	1200-4000	6	14	6	Sand beach landing with sandy tent sites between rock outcrops. This site is separated from main Missouri Bar camp by upriver rock outcrop.
Missouri Bar	16.65	L	No	1200-4000	10	20+	10	Large bedrock ledge with sand pockets for tents. Downriver bedrock outcrop at end of camp separates this area from Middle Missouri Camp.
Turtle Rock	16.25	R	No	1200-4000	8	14	6	Steep sand landing area between bedrock outcrop with a flat camp area on a high sand bench.
J and B Rock Bar	15.85	R	Yes	1200-4000	4	6	3	Sandy beach landing with three small tent sites on sand.
J and J Rock Bar	15.70	L	No	1200-4000	5	2	1	Gravel/cobble bar with one rocky tent site. Good option for boaters with cots.
Lower Winkle Bar	15.50	R	Yes	1200-4000	5	10	5	Long rock/sand bench with flat tent sites amidst willow stand. Popular stopping area for lunch/exploring of Zane Gray Cabin NHS.
Haas Island	15.20	Isl	No	1200-4000	6	2	1	Mid-channel cobble island with a few level areas for tent sites.

▲ River Campsite - Large ▲ River Campsite - Medium ▲ River Campsite - Small

\*Please Note: Marial Beach is an administrative access point. Recreationists may be interrupted by agency personnel. No public launch/takeout here.

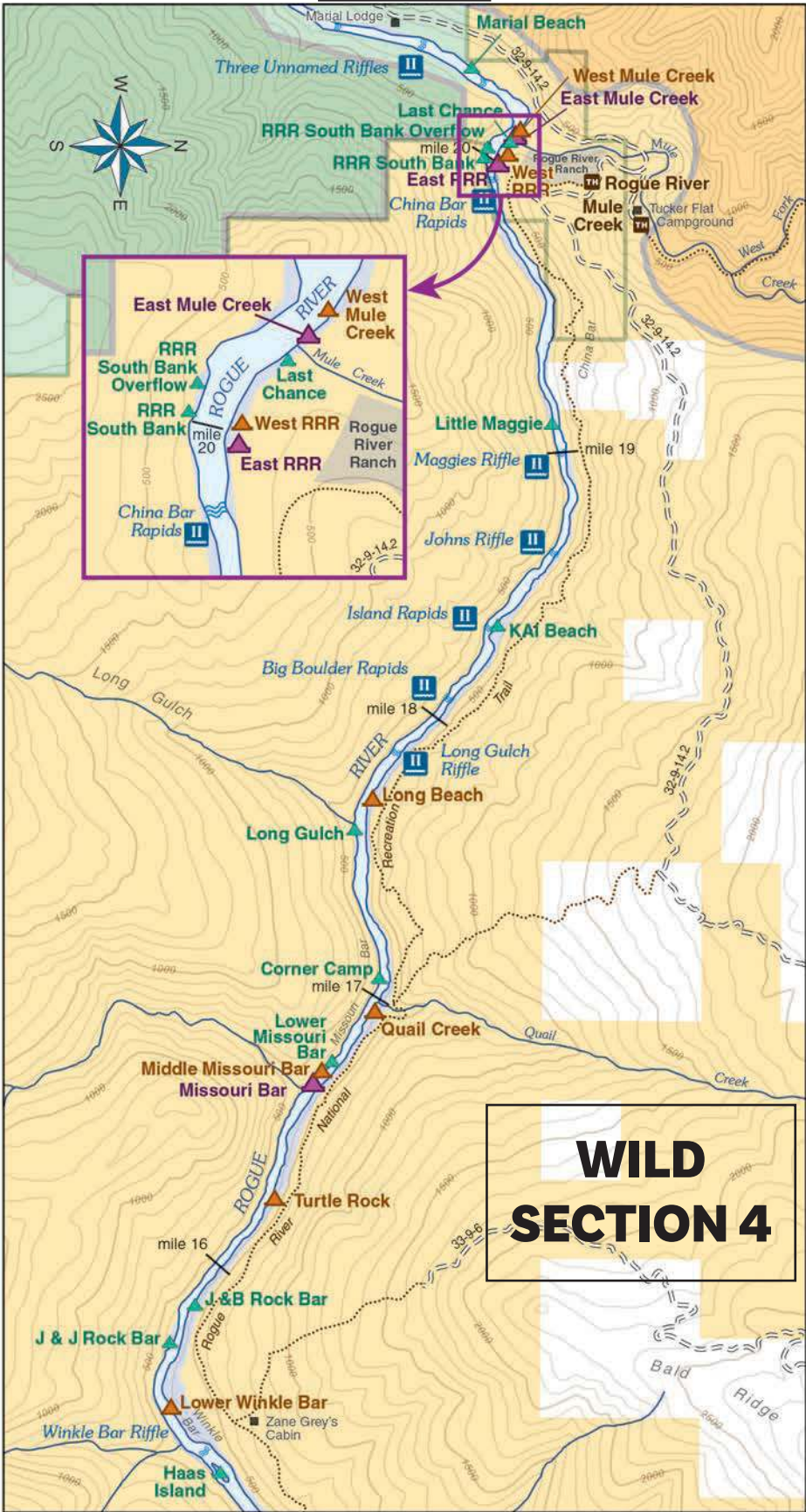
↑ TABLE READS THIS DIRECTION ↑

*"It raced and eddied by turns; it tarried under the high golden meadows that shone like jewels on the black mountain slopes; it glided on in glancing ripples around Winkle bar, gentle and reluctant and sweetly vagrant..."*

**[Zane Grey, Rogue River Feud]**



SECTION 5



SECTION 3

↑ MAP READS THIS DIRECTION ↑

# WILD SECTION 5

Campsite Name	Miles From Grave Cr	Side of River	Trail Access	Flow Range/CFS	# of Boats	# of People	# of Tents	Site Description
Lower Brushy Bar	26.80	R	Yes	1200-4000	4	6	4	Swift water landing to steep, rocky trail that leads to several level tent sites on upper bench. Outhouse.
Brushy Bar	26.65	R	Yes	1200-4000	5	8	5	Ledge rock landing area and upper bench with several satellite tent sites, one in upland forest. Outhouse.
Black Bear Bar	26.65	L	No	1200-4000	6	12	6	Level sandy beach with several tent sites adjacent to large cobble bar.
Sturgeon	26.25	R	No	1200-4000	4	4	2	Sandy pocket beach below a bedrock cliff with space for two tents. At flows below 1500 cfs a third tent site is accessible on the upriver pocket beach.
Lower Half Moon Bar	24.90	R	Yes	1200-4000	6	14	9	Small boat landing leading to a ledge rock bench with sand tent sites and satellite sites in the grass. Outhouse, bear resistant food storage fence.
Middle Half Moon Bar	24.85	R	Yes	1200-4000	6	12	6	Cobble bar landing with several patches of flat sand for tent sites.
Upper Half Moon Bar	24.75	R	Yes	1200-4000	15	18	8	Long, flat rocky and sandy beach with satellite tent sites.
Pinnacle Point	23.70	L	No	1200-4000	3	6	3	Small landing area in an alcove between bedrock outcroppings.
North Gleason	23.55	R	Yes	1200-4000	8	6	3	Long gravel beach with a steep rocky climb to several small tent sites on upper bench. Outhouse located on Rogue River Trail above camp.
Lower South Gleason	23.50	L	No	1200-4000	4	2	1	Bedrock and cobble boat landing with one small campsite.
Upper South Gleason	23.45	L	No	1200-4000	6	4	7	Rocky boat landing and a steep climb to several scattered sand tent sites.

▲ River Campsite - Large    ▲ River Campsite - Medium    ▲ River Campsite - Small

↑ TABLE READS THIS DIRECTION ↑

## Bear Safety

The Rogue River has a large population of the American black bear, ranging from dark black to brown, cinnamon, and blond. While beautiful to view from a distance, they can be unpredictable and dangerous up close. Bears can enter camp and steal food or garbage. They are not always frightened when campers shine lights or make noise.

- Remove food and food storage containers from your boat. Bears often get into and damage boats, even when boats are anchored offshore.
- Keep your camp clean. Pick up food scraps and store your garbage overnight in a dry box or cooler or hang it at least twelve feet off the ground between two trees and six feet from tree trunks. Remove food smells from tables, utensils, and coolers with alcohol or ammonia.
- Strap coolers and dry boxes together and stack empty pans or cans on top so that you will be alerted if a bear tries to raid your food.



SECTION 6



SECTION 4

MAP READS THIS DIRECTION

# WILD SECTION 6

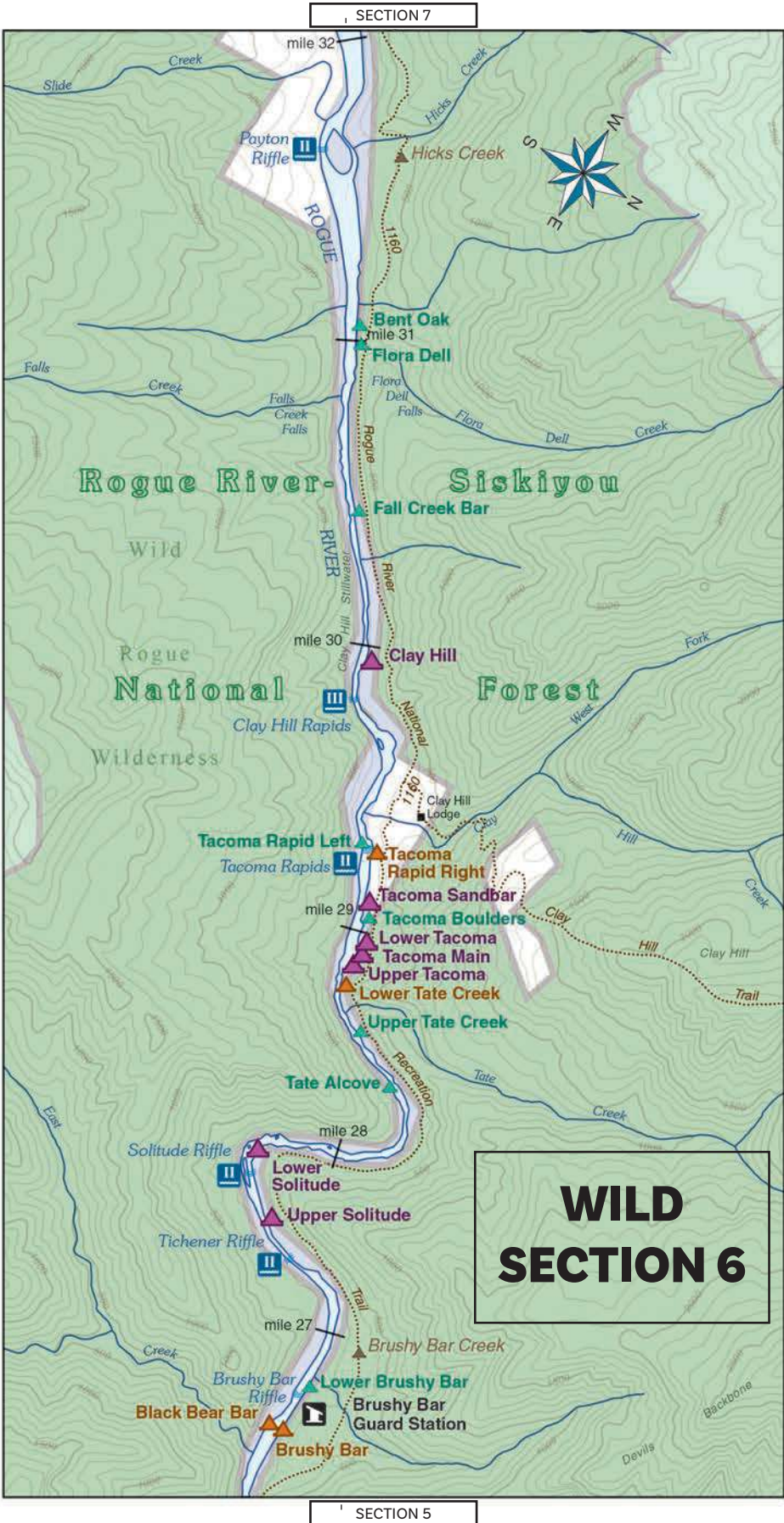
Campsite Name	Miles From Grave Cr	Side of River	Trail Access	Flow Range/CFS	# of Boats	# of People	# of Tents	Site Description
Bent Oak	31.05	R	Yes	1200-4000	3	6	3	Grassy bench with two small boat landings with several tent sites on sand pockets scattered in the sparse grass.
Flora Dell	30.95	R	Yes	1200-4000	3	6	4	Rocky landing with access to several flat sand and bedrock tent sites next to Flora Dell creek.
Fall Creek Bar	30.45	R	No	1200-4000	5	6	3	Sloping sand filled pocket beach with limited space for tent sites.
Clay Hill	29.95	R	No	1200-4000	10+	20+	15	Large sand beach landing with campsites available on beach and grass and bedrock bench above.
Tacoma Rapid Left	29.30	L	No	1200-4000	2	4	2	Swift water boat landing with small sand/gravel beach. Becomes available at or below 3,000 cfs. Be prepared to pull hard left to land at this site.
Tacoma Rapid Right	29.25	R	No	1200-4000	5	16	8	Swift water boat landing with uneven, rocky terrain between river and camp area. Be prepared to pull hard right to land at this site.
Tacoma Sand Bar	29.10	R	Yes	1200-4000	6	18	9	Long sandy beach and flat bench camping area.
Tacoma Boulders	29.05	R	Yes	1200-4000	5	6	4	Sand beach landing with boulders and several tent sites located on a grass and sand bench.
Lower Tacoma	28.95	R	Yes	1200-4000	8	20	10	Flat, open campsite with grassy bench and multiple tent sites. Bear resistant food storage.
Tacoma	28.90	R	Yes	1200-4000	7	20	10	Three separate boat landings access a sand camp area with multiple satellite tent sites. Outhouse and bear resistant food storage.
Upper Tacoma	28.85	R	Yes	1200-4000	10	17	8	Sloping bedrock landing with multiple sandy tent sites. Outhouse and bear resistant food storage.
Lower Tate Creek	28.80	R	Yes	1200-4000	10	12	6	Steep sandy beach landing area with a flat bench at top. Several satellite tent sites in grassy area above sand bar. Steep climb to Rogue River Trail.
Upper Tate Creek	28.65	R	Yes	1200-4000	4	6	3	Sandy beach with multiple possible tent sites. Useable camp space expands as flows drop below 1500 cfs.
Tate Alcove	28.40	L	No	1200-4000	3	4	2	Rocky ledge landing with an upper bench and space for two tents dispersed among a boulder garden.
Lower Solitude	27.70	R	Yes	1200-4000	10	20	12	Swift water cobble bar landing with camp access trail leading to a sandy beach with multiple tent sites. Outhouse, bear resistant food storage.
Upper Solitude	27.45	R	Yes	1200-4000	8	18	8	Cobble bench with sand pockets and multiple satellite tent sites. Bear resistant food storage.
Lower Brushy Bar	26.80	R	Yes	1200-4000	4	6	4	Swift water landing to steep, rocky trail that leads to several level tent sites on upper bench. Outhouse and bear resistant food storage.
Brushy Bar	26.65	R	Yes	1200-4000	5	8	5	Ledge rock landing area and upper bench with several satellite tent sites, one in upland forest. Outhouse, bear resistant food storage.
Black Bear Bar	26.65	L	No	1200-4000	6	12	6	Level sandy beach with several tent sites adjacent to large cobble bar.

▲ River Campsite - Large    ▲ River Campsite - Medium    ▲ River Campsite - Small

↑ TABLE READS THIS DIRECTION ↑







# WILD SECTION 7

Campsite Name	Miles From Grave Cr	Side of River	Trail Access	Flow Range/CFS	# of Boats	# of People	# of Tents	Site Description
Eagle Rock	32.90	R	No	1200-4000	4	10	5	Small sand beach with several small tent sites on a grass and bedrock bench.
Burnt Rock	32.70	L	No	1200-4000	7	18	8	Ledge rock landing with a flat sand beach and willows.

▲ River Campsite - Large ▲ River Campsite - Small



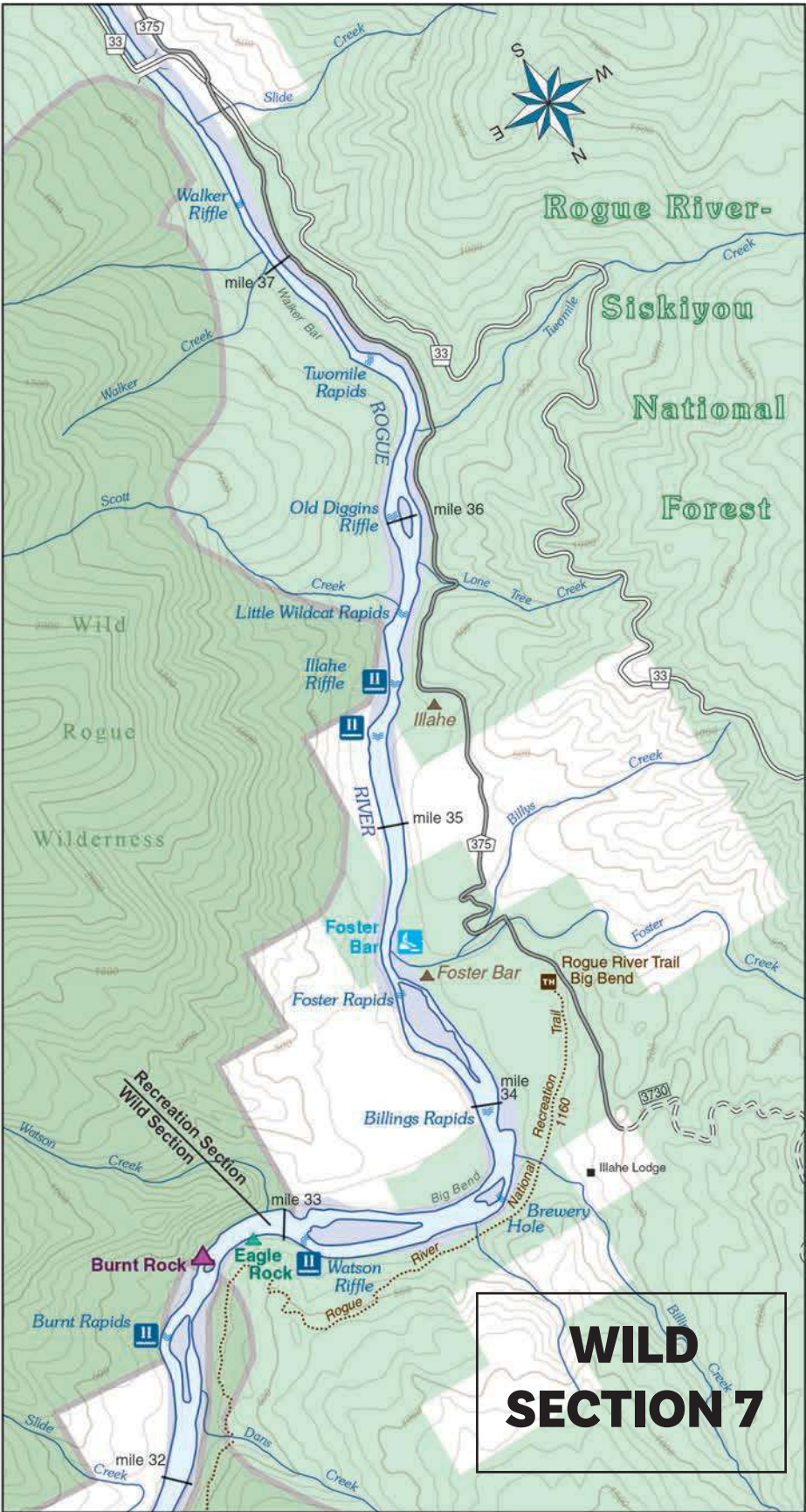
TABLE READS THIS DIRECTION



## River Etiquette

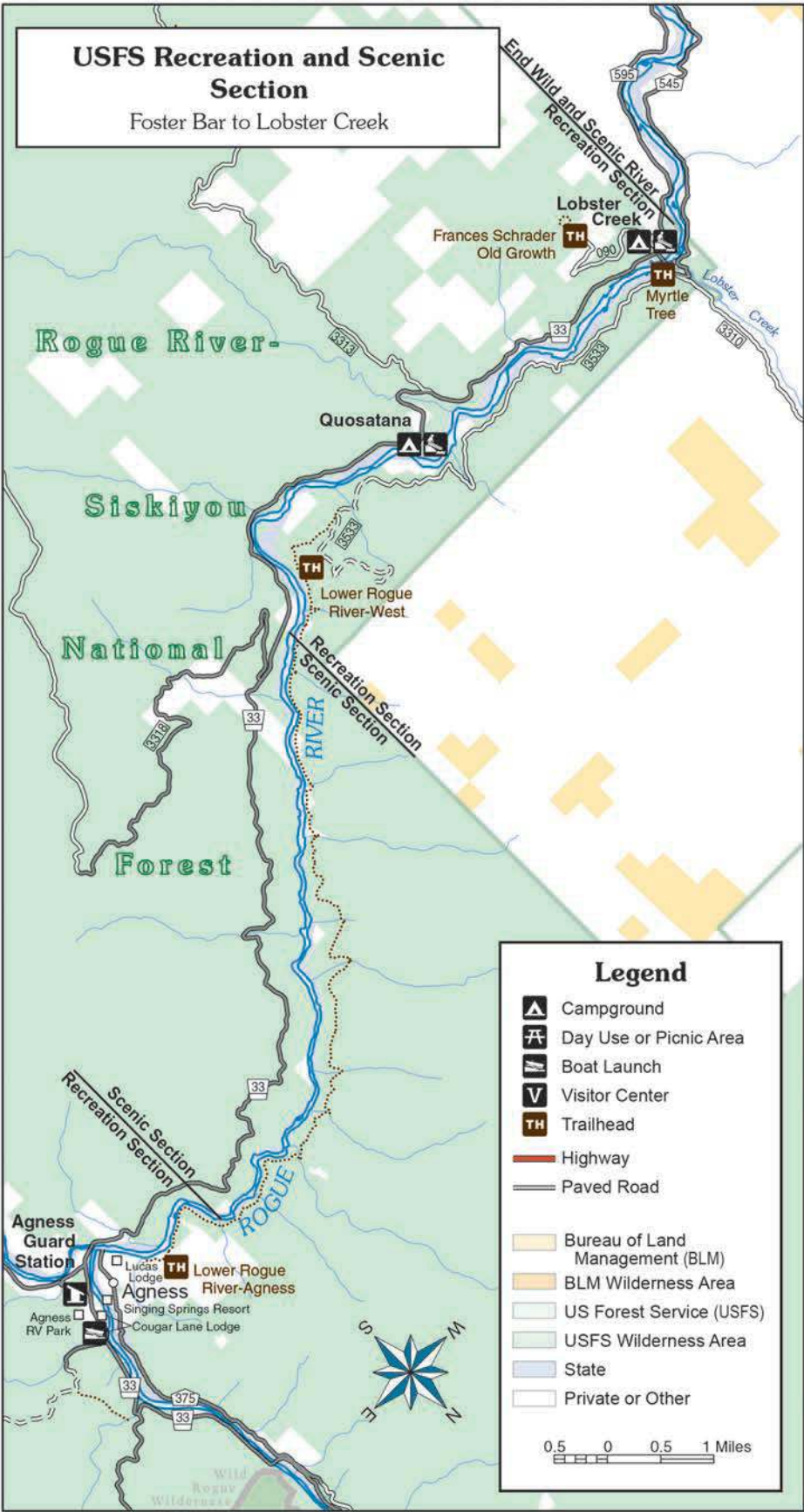
- A river trip is not a solo event; your actions directly and immediately affect the experience of other visitors. You are responsible for your actions. Please conduct your trip to nurture the “community” concept.
- Gray water (urine and strained wastewater) should be discarded into the river or scattered over a broad area far away from campsites and at least 200 feet from side streams.
- Pack out all trash, including “micro-trash”.
- Protect fish habitat by keeping streams and the river free of substances that do not occur naturally, and avoid disturbing gravel beds that may contain fish eggs in the spring and fall.
- All cultural sites and artifacts are protected by law. Enjoy, but please leave them intact and in place for other visitors to experience.
- Fire pans are required for open fires within 400 feet of the river’s edge. Carry out all your ashes. During the summer months, special fire restrictions may be in effect that would preclude open fires.
- Treat wild animals appropriately to ensure the health and safety of both wildlife and the public. Maintain a safe distance and refrain from habituating any wildlife, especially bears. Habituation includes initiating unnatural interactions with and feeding wildlife. Visitors should maintain a clean camp so as not to attract unwanted animals, and should never offer food to any wild animals. Feeding wild animals is both unsafe and can encourage animals to depend on human rather than natural food sources.





SECTION 6

↑ MAP READS THIS DIRECTION ↑



↑ MAP READS THIS DIRECTION ↑



# MORE INFORMATION

## ***River Information***

Smullin Visitor Center at Rand  
14335 Galice Road  
Merlin, Oregon 97532  
phone: 541-479-3735  
fax: 541-479-0535

## ***Hours of Operation***

May 5th through October 15th  
7:00 am to 3:00 pm — seven days a week  
Phone access hours 8:00 am to 3:00 pm  
Year-round access by email at  
[BLM\\_OR\\_MD\\_Rogue\\_River\\_Mail@blm.gov](mailto:BLM_OR_MD_Rogue_River_Mail@blm.gov)  
or by phone at 541-471-6500

## ***BLM Rogue River Info Page***

[blm.gov/rogueriver](http://blm.gov/rogueriver)

## ***Rogue River-Siskiyou National Forest Gold Beach Ranger District***

29279 Ellensburg Ave Gold Beach, OR 97444  
Phone: (541) 247-3605

[fs.usda.gov/detail/rogue-siskiyou/about-forest/offices](http://fs.usda.gov/detail/rogue-siskiyou/about-forest/offices)

USGS Daily Data for Oregon Streamflow: [tinyurl.com/y86svmf5](http://tinyurl.com/y86svmf5)

NOAA Northwest River Forecast Center: [tinyurl.com/y86svmf5](http://tinyurl.com/y86svmf5)

Oregon Aquatic Invasive Species Permit Info: [tinyurl.com/yddxn8j7](http://tinyurl.com/yddxn8j7)

## ***BLM Social Media***

[Facebook.com/BLMOregon](https://www.facebook.com/BLMOregon)  
[Flickr.com/BLMOregon](https://www.flickr.com/photos/BLMOregon/)  
[Twitter.com/BLMOregon](https://twitter.com/BLMOregon)  
[YouTube.com/BLMOregon](https://www.youtube.com/BLMOregon)

## ***USFS Social Media***

[Facebook.com/R6RRSNF](https://www.facebook.com/R6RRSNF)  
[Twitter.com/RRSNF](https://twitter.com/RRSNF)

**Download this boater's guide  
directly to your mobile device!**



*This and other maps  
are available for  
purchase and  
download at:*



**<https://www.avenzamaps.com/maps/826033>**



"AND THE RIVER GLIDED ON IN AN ENDLESS SOLITUDE. ITS ETERNAL SONG, LOW AND MUSICAL, NEAR AT HAND. DRONING SWEET MELODY FROM THE RAPID AT THE BEND, AND FILLING THE DISTANT DROWSY AIRE WITH ITS SOFT THUNDER."

*ZANE GREY, ROGUE RIVER FEUD*



## ROGUE RIVER BOATER'S GUIDE

THE BUREAU OF LAND MANAGEMENT  
[BLM.GOV/OREGON-WASHINGTON](http://BLM.GOV/OREGON-WASHINGTON)

U.S. FOREST SERVICE  
[FS.USDA.GOV/R6](http://FS.USDA.GOV/R6)

